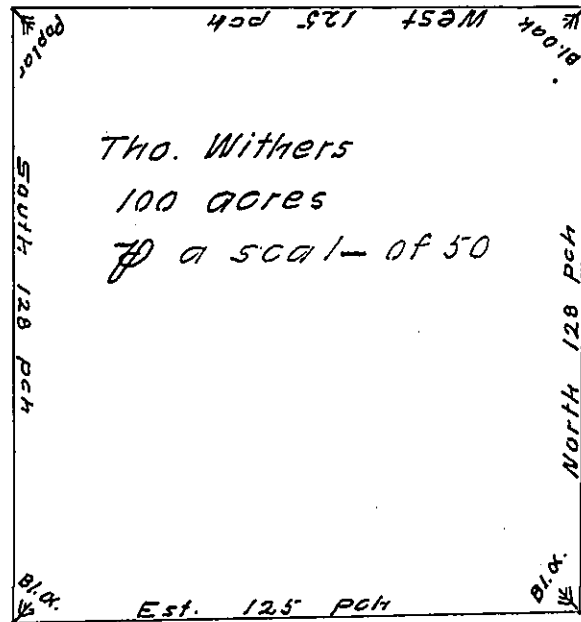


STANFIELD LAND



William Kindly

By virtue of a warrant to me directed by Edward Pennington
Surv^r Gen^l dated ye 24th 11th mo. 1709

I have layd out for Thomas Withers a tract of land in ye
County of Ch^{tr} beginning at a corner poplar being a corner
of ye land coled Stanfeilds land thence south 128 pch to a
corner black oak then Est 125 pch to a corner black oak
then North 128 pch to a corner black oak then West 125 pch
to the place of beginning containing 100 acres of land
surveyed the 27th 1st mo. 1701

J. Henry Hollingsworth
SURV^r

IN TESTIMONY that the above is a copy of the original remaining on file in
the Department of Internal Affairs of Pennsylvania, made
conformably to an Act of Assembly approved the 16th day of
February, 1833, I have hereunto set my Hand and caused
the Seal of said Department to be affixed at Harrisburg,
this fourteenth day of July 1909

Henry Howell
Secretary of Internal Affairs.